

## MXI systems: team players for special tasks



**Intelligent networking  
of production**

**Immediate feedback  
of production quality**

**Easily classified defect images**

**Inspection concept  
optimized by results**

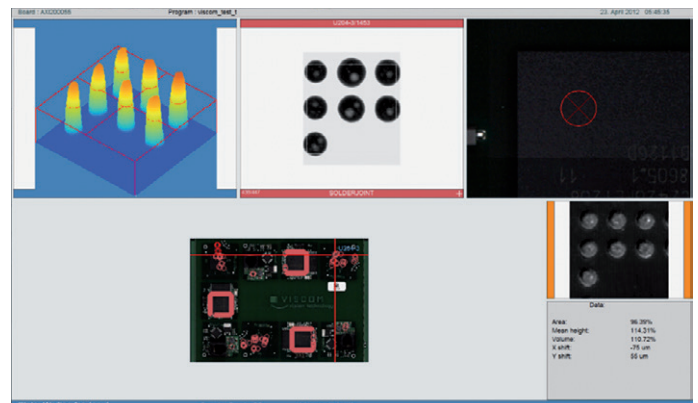
In modern electronics manufacturing, production, inspection, evaluation and optimization are intelligently networked to increase yields and quality. For fast, efficient defect detection, Viscom offers AOI and AXI systems to achieve optimal results in-line. MXI systems for manual inspection and analysis of hidden production flaws complete the product range.

### Very good investment

An X-ray analysis professionally adapted to the requirements will reliably cover defects even where the connections are hidden, as is the case with SMD components such as BGA, QFN or QFP. In this area, Viscom has high-tech solutions on offer which are particularly distinguished by their versatility and cutting-edge integration possibilities. With these attributes, they are ideal for utilizing the two Viscom concepts Quality Uplink and TrueYield.

### Information retrieved easily

One way the advantages of a high-resolution manual X-ray inspection system from Viscom are demonstrated is when a suspected defect can be neither confirmed nor denied in-line. Thanks to Viscom Quality Uplink, the inspection results from SPI, AOI, AXI and MXI are integrated into a seamless, comprehensive process; the Viscom TrueYield tools as a whole facilitate optimum line networking alongside the best possible defect detection and avoidance. All inspection data, for example from the 3D solder



The images and data from all inspection gates are ready at the verification station.

**3D MXI**



**Basis for well-informed decisions**

**Fast improvement  
in quality and yield**

**Highest production efficiency**

**Protection of valuable resources**

paste inspection, are also made available to the MXI verification station for an in-depth analysis. This way, it could not be easier for the user to compare them to qualified data and images from the X-ray analysis.

### Established and new features

This means the MXI systems from Viscom possess all the advantages of a manual X-ray system, especially regarding versatile adaptation to new demands, lengthy service life and brilliant image quality; at the same time, they are fully compatible with Industry 4.0. Inspection data and results are available right where they are needed. A more accurate inspection is normally carried out only when the probability that e.g. a soldered connection is faulty actually is high.

### Fully operational

In this way, manual X-ray inspection makes a decisive contribution to locating and classifying defects with precision, controlling production more efficiently and optimizing processes. Relevant information is provided in real time and the defects are easily monitored and tracked. It all comes down to increased quality and lower production costs.

Like the professional team player, an MXI system from Viscom is thoroughly prepared to perform its individual task while being intelligently integrated into the overall Viscom strategy.