

# RTX-113HV Micro-30

## A High Magnification X-ray Inspection System



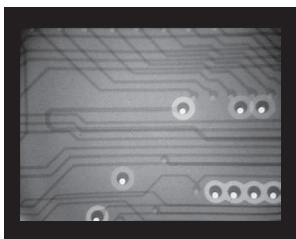
### Compact, Simple and Easy to use

The new RTX-113HV Micro-30 X-ray Inspection System with enormous capability, is compact enough to fit in a lab or production floor.

The system employs a PC controlled 40 to 80 x-ray tube with 30 micro focal spot. Our patented XRTV x-ray camera technology is now enhanced with Crystal-X imaging for higher contrast. This combination advances our RTX Series for higher resolution and magnification requirements with up to 100x geometric and 225x optical magnification.

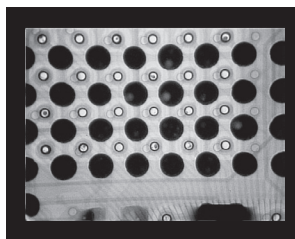
Applications include Small Hole Drilling of PC Boards, BGAs, Micro BGA's, QFN, LED, Medical Devices and more. Our x-ray systems offer superior reliability with over 2,500 customers in 55 countries.

## APPLICATIONS



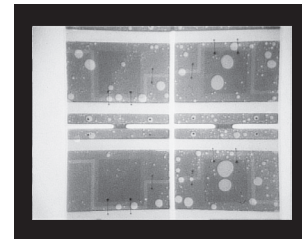
### Small Hole Drilling of PC Boards

Now inspect drilled holes as small as 4 mil. using geometric and optical magnification up to 225x. The x y drill offset can be accurately measured using our GTI-3000 image processing software.



### BGA Inspection

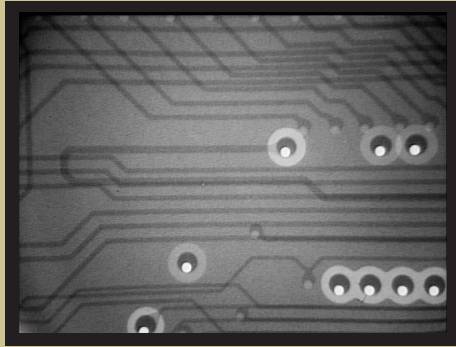
Check for voids, opens, shorts and insufficient reflow. BGA Ball Size, Ball Roundness and Void Size can be measured using the advanced features of our GTI-5000 image processing software. It's ideal for quick process inspection for more advanced image analysis.



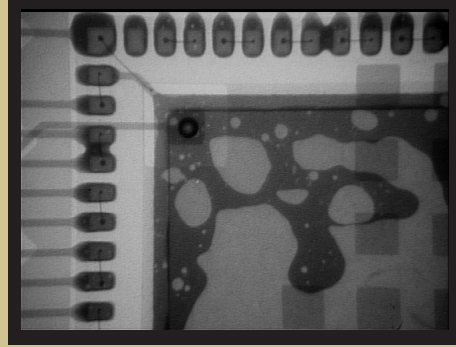
### BGA Inspection

Quickly and easily inspect LED's for voids. Additional void measurement is available by using our GTI-5000-our image processing software for superior image analysis.

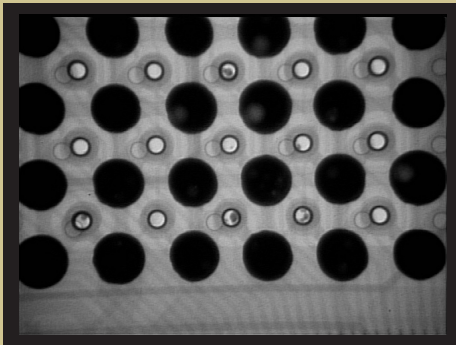




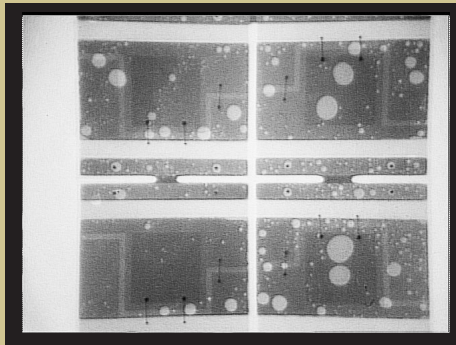
Small Hole Drilling of Multilayer PC Board:  
Misregistration on 6mil hole to pad



QFN Inspection: Shorts on QFP Package



BGA Inspection: Voids in BGA Package



Voids in LED Device

SPECIFICATIONS

- Magnification up to 100x geometric + 225x optical
- MotORIZED x-y positioning
- Voltage: Auto switching 120v or 220v
- Contrast Resolution: Can resolve .001 gold wire
- Spatial Resolution: 20lp/mm up to 100lp/mm
- Anode Voltage: 40Kv-80Kv (PC Controlled)
- Anode Current: 20-150 microamps
- X-ray Tube Focal Spot: 30 microns
- Dimensions: L43" X W36" X H52"



Optional: Variable angle viewing allowing 45 degree viewing  
Available with GTI-2000, 3000 or 5000 Imaging Processing Software

**Glenbrook: A Global Presence**

Australia ■ Belgium ■ Brazil ■ Canada ■ China ■ Czech Republic ■ Denmark ■ England ■ Finland ■ France  
Germany ■ Hong Kong ■ India ■ Ireland ■ Israel ■ Italy ■ Japan ■ Malaysia ■ Mexico ■ Phillipines ■ Scotland  
Singapore ■ South Korea ■ Spain ■ Sweden ■ Switzerland ■ Taiwan ■ Thailand ■ Turkey ■ USA

Phone: 973-361-8866  
Fax: 973-361-9286  
Toll free: 800-600-8866

[www.glenbrooktech.com](http://www.glenbrooktech.com)



Glenbrook Technologies  
11 Emery Avenue  
Randolph, NJ 07869 USA