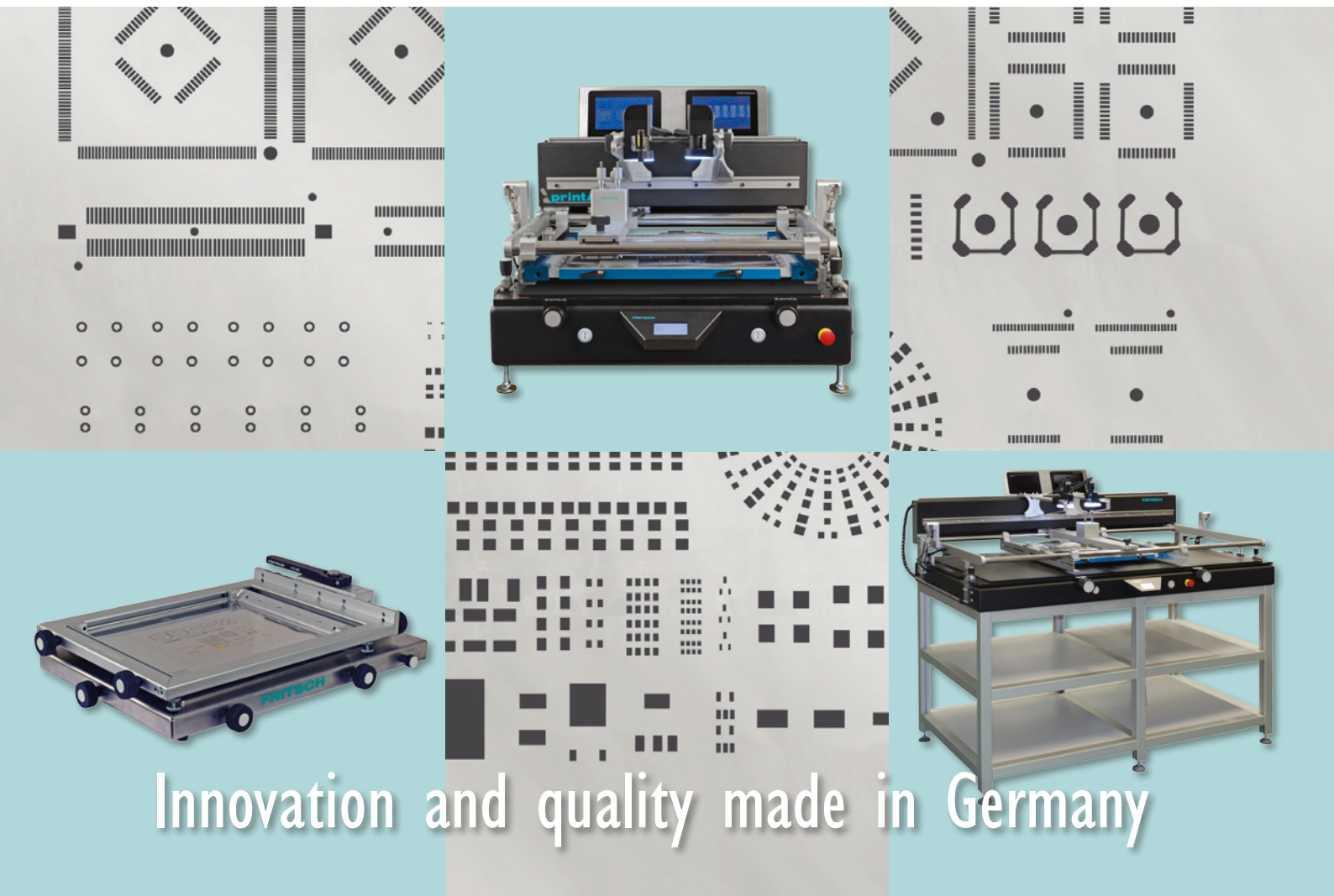






Stencil printer p r i n t A L L



Innovation and quality made in Germany

Contents

Manual stencil printer printALL005		4
System options.....		5
Semi-automatic stencil printer printALL210		6
Construction.....		8
System options.....		9
Options.....		10
Accessories		12
Other machines		15

The printALL005 is a manual stencil printer with a stable base frame for a high print quality. The solid construction offers an easy handling and a clean and reproducible print, even for fine structures of 0,5 mm. The printer is ideal for the production of prototypes and small series.

Easy handling

The basic model is good to print single and double sided PCBs. For this, the PCB are placed on the base plate and mechanically fixed. The X-Y and theta axis can easily be set by using knurled screws. A parallel clearing ensures a clean separation of the PCB and stencil and guarantees a perfect print image.

Technical Details

Size of clamping frame: max. 460 x 30 x 355 mm
Effective area: max. 390 x 290 mm

With stencil frame 903.203:

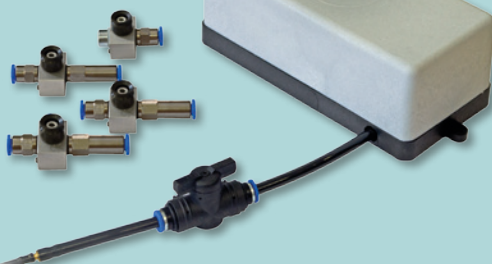
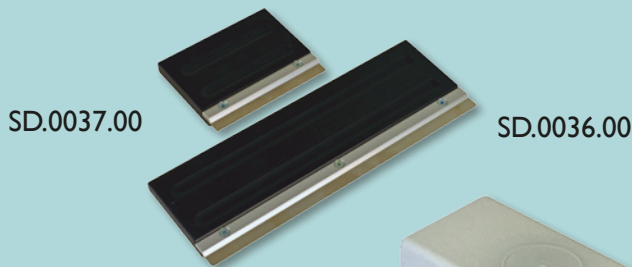
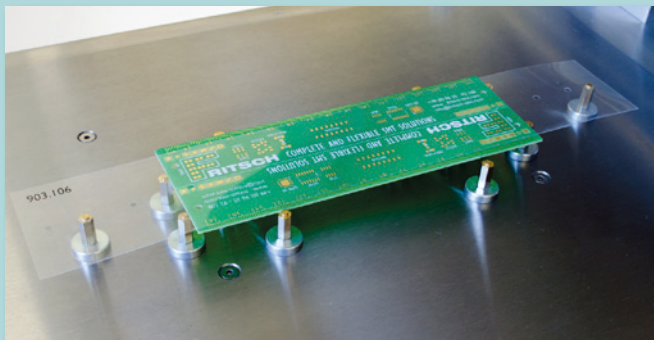
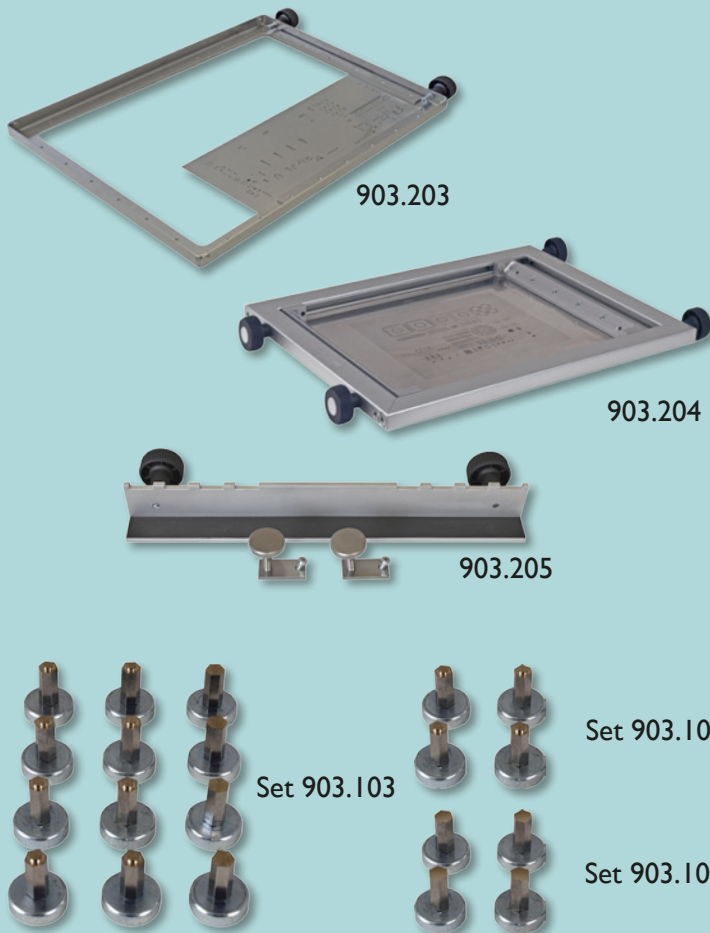
size of stencil: max. 420 x 320 mm
size of PCB/effective area: max. 380 x 280 mm

With stencil-tension-frame 903.204:
size of stencil: max. 360 x 280mm
size of PCB/effective area: max. 330 x 270 mm

With magnetic-PCB-fixturing set for double-sided printing:
PCB bottom side: max. 18 mm



System options



Stencil intake

There are three variants for the intake of stencils available. For simple tasks we offer a universal frame for stencil sheets where the stencils are simply clamped without tension. (903.203).

Optimal is to use the universal stencil-tension-frame (903.204). Different sizes of stencils can be used. The tension is effected from two sides and there isn't a perforation necessary.

A base plate for the use of fixed aluminium frames and accordingly for established Quick-Change-Systems. (903.205).

PCB fixture

For double-sided printing the PCB has to be fixed by the magnetic fixture. (Necessary by the use of a stencil-tension-frame).

Magnetic-PCB-fixture-set Set (903.103) for double-sided printing

1 x Magnetic-PCB-support-set (903.105)

2 x Magnetic-PCB-fixture-set (903.104)

Magnetic-PCB-fixture-set (903.104) for double-sided printing / 4 x PCB-fixture

Magnetic-PCB-support-set (903.105) for double-sided printing / 4 x PCB-support

Test film

The test film (903.106) facilitates the rough set up of the PCB.

Hand-squeegee

SD.0037.00 Hand-squeegee 110 mm, metal

SD.0036.00 Hand-squeegee 255 mm, metal

Vacuum option

Flexible vacuumoption for safe down-fixation of PCB while printing. (903.206). Incl. 4 magnetic suction cups and manual vacuum-deactivating.

The semi-automatic stencil printer with its easy handling provides clean and reproducible prints even in the case of fine structures. It is suitable for the production of prototypes as well as small and medium-sized series. The printer's stable set up is the basis for today's requirements of fulfilling the high demands of production quality. This is also safeguarded when the smallest of chips and fine structures come into use.

Conic centering pins guarantee a high repeatability and enable Fine-Pitch printing up to pitch 0.5 mm. The automatically opening and closing of the printer's top is supported by two pneumatic cylinder. Furthermore the top is fixed by two pins for correct alignment.

The semi-automatic stencil printer printALL210L is the continuation of the printALL210. Both systems are identical in solid construction and easy operation. This is the base of a clean and reproducible stencil printing and makes the handling of fine structures possible without any problems. The intake of PCBs with a size of up to 600 x 430 mm are possible at the printALL210L.

The semi-automatic stencil printer printALL210XL is the largest of the range. It was especially constructed for the handling of oversized PCBs. FRITSCH argues about a maximum PCB size up to 1240 x 600 mm.

Visionsystem

In the case of fine structures in particular, the vision system alleviates the positioning of the stencil and thus increases the accuracy of the print. The vision system for the printALL210 - range enables with its enormous enlargement the sharp recognition of finest structures. Both cameras have a laser positioning-help which displays the adjusted image detail.

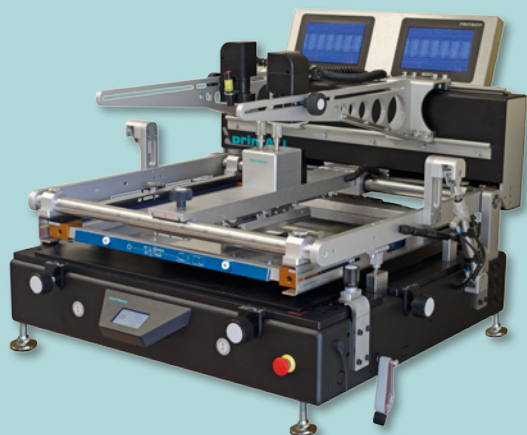
Vacuum table

Conditioned by the size the integration of a vacuum table is possible to guarantee a save and smooth intake of PCBs and foils. Therefore the required accuracy on oversized circuit carriers is ensured, too. The retrofit from standard intake to vacuum table and back is possible in a few minutes.

Undertable

The printALL system can be used as table machine or in combination with the undertable. The undertable has by standard a storage shelf or can be equipped with a suspended register for 34 stencils.

printALL210



printALL210

Semi-automatic stencil printer printALL210 for prototypes and small to medium-sized series.

Scope of delivery:

- Double squeegee for clean printing in both directions
- Standard squeegee 205 mm
- Flexible PCB fixture for one- and double-sided printing
- Parallel table lowering after printing
- Squeegee unit can be opened for easy cleaning

Technical details

Printing area: max. 370 x 460 mm
PCB size: max. 440 x 430 mm



printALL210L

Semi-automatic stencil printer printALL210L for prototypes and small to medium-sized series.

Scope of delivery:

- Double squeegee for clean printing in both directions
- Standard squeegee 205 mm
- Flexible PCB fixture for one- and double-sided printing
- Parallel table lowering after printing
- Squeegee unit can be opened for easy cleaning

Technical details

Printing area: max. 530 x 460 mm
PCB size: max. 600 x 430 mm



printALL210XL

Semi-automatic stencil printer printALL210XL for prototypes and small to medium-sized series. Only useable with undertable.

Scope of delivery:

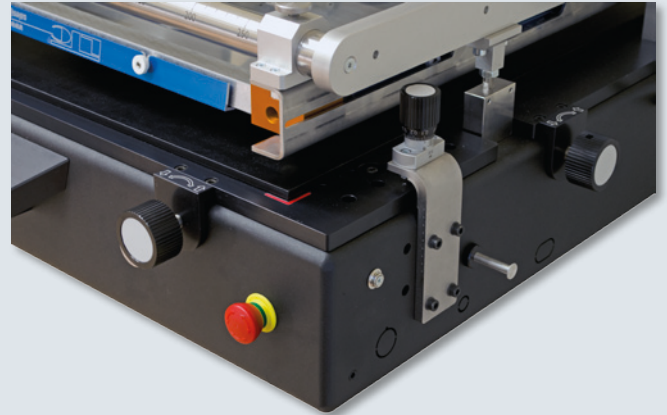
- Vision camera
- Motoric feed
- Pneumatic supported frame holder
- Double squeegee for clean printing in both directions
- Standard squeegee 375 mm
- Flexible PCB fixture for one- and double-sided printing
- Parallel table lowering after printing
- Squeegee unit can be opened for easy cleaning

Technical details

Printing area: max. 1170 x 630 mm
PCB size: max. 1240 x 600 mm

Table lowering

The parallel table lowering ensures clean printing results even in the case of large PCBs. A smearing of the printed layout is thus part of the past. With the optional control, the lowering automatically takes place after the PCB has been printed.



Maintenance and clearance

Both the stencil and the squeegee itself can be easily cleaned by simply opening the squeegee unit. The squeegee unit can be locked into the open position so that both hands are free for cleaning it.

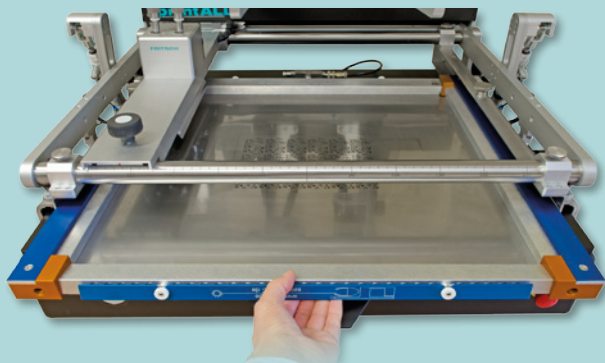


Double-squeegee

The stencil printer has a double squeegee for flawless paste printing in both directions. The paste is applied within the double squeegee and is thus applicable in both directions. The contact pressure of the squeegee can be set by a screw. The squeegee angle is adjustable from 45° up to 90°.



System options



Quick-Change-Frame

Common, sturdy aluminium frames and other usual quick change systems are used without the need for further adaptations. That enables the printing of the smallest of PCBs up to a maximum printing surface of 530 x 460 mm.

printALL210	printALL210L	printALL210XL
✓	✓	✓

Flexible PCB fixture

The PCBs are fixed by easily adjustable magnet fixtures. The fixture can thus be adapted to a different PCB within a few seconds. The fixtures and supports included in delivery enable the one- or double-sided printing of PCBs.

printALL210	printALL210L	printALL210XL
✓	✓	✓

Vacuum table

A vacuum table can be integrated for the production of flexible PCBs. It guarantees a safe fixation for foils or thin PCBs. A conversion from vacuum table to the conventional circuit board recording and vice versa is uncomplicated because it adheres to the printing table with a magnetic film.

printALL210	printALL210L	printALL210XL
✓	✓	✓

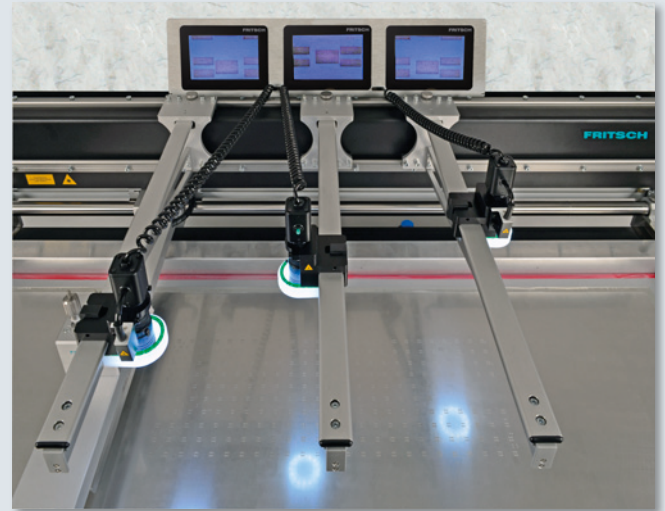
Motor-driven print

The optional microprocessor controller controls the lowering squeegee, controls the motor-driven squeegee feed and makes sure the print is even and reproducible. After printing, the table is automatically lowered over the pneumatic cylinder in a parallel position and the printer can be opened. All functions of the printer are handled by an optimized intuitive Touch Display. There is also the possibility to save product-specific programs. So the production can start only by choosing the accordant program.

printALL210	printALL210L	printALL210XL
✓	✓	✓

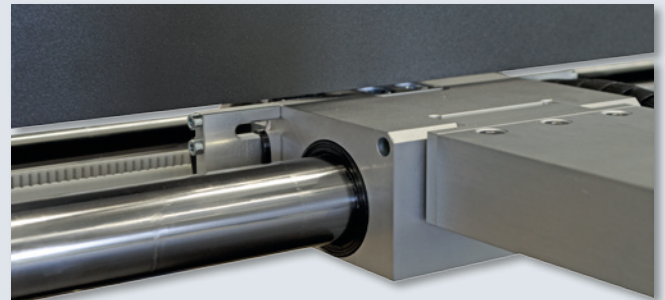
Vision systems

- 903.210.135 Vision camera for printALL210
By means of two cameras, a safe and fast alignment of the stencil is given.
- 903.210.140 Vision camera for printALL210L
- 903.210.142 Vision camera for printALLXL
(Included in basic unit.)
- 903.210.143 Additional camera-arm with camera, object lens, lightning, and laser pointer for stencil printer printALL210XL



Squeegee feed

- 903.210.120 Motor-driven squeegee feed for printALL210
Adjustable squeegee speed for clean and reproducible prints
Microprocessor controller.
- 903.210.125 Motor-driven squeegee feed for printALL210L
Adjustable squeegee speed for clean and reproducible prints
Microprocessor controller.



Frame holder

- 903.210.155 Pneumatically supported frame holder for opening and closing the print frame by using a pneumatic cylinder for printALL210/L.

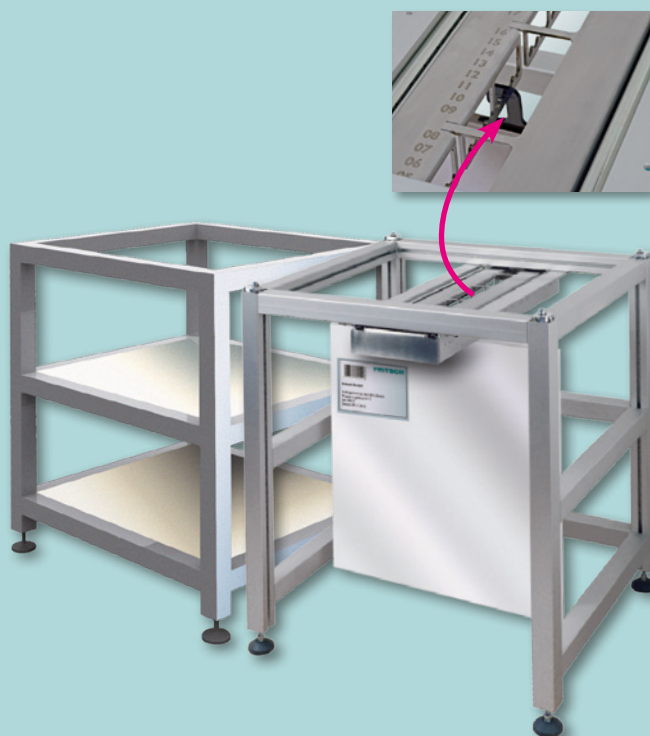
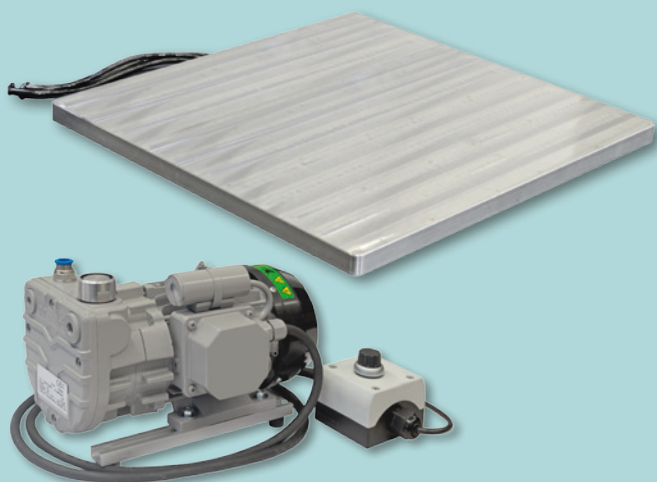


Drawer System

- 903.210.165 Pneumatically drawer system for printALL210
- 903.210.166 Pneumatically drawer system for printALL210L



Options



Vacuum table

- 903.210.130 Vacuum table for printALL210
Vacuum table 460 x 400 mm for the safe intake of foils and thin PCBs.
- 903.210.131 Vacuum table for printALL210L
Vacuum table 614 x 400 mm for the safe intake of foils and thin PCBs.
- On demand Vacuum table for printALL210XL
- 908.191.122 Vacuum pump for Vacuum table

Vacuum option

- 903.210.151 Flexible vacuum-option for printALL210 for safety pressing on the PCB while printing. 4 magnetic suction cups and automatic vacuum de-activation. Only in combination with Motor-driven squeegee feed.
- 903.210.152 Flexible vacuum-option for printALL210/L/XL for safety pressing on the PCB while printing incl. 12 magnetic suction cups.

Undertable

- 903.210.410 Undertable for printALL210 with storage shelf
- 903.210.412 Undertable for printALL210 with suspended register for 34 stencils
- 903.210.415 Undertable for printALL210L with storage shelf
- 903.210.416 Undertable for printALL210L with suspended register for 34 stencils
- 903.210.420 Undertable for printALL210XL with storage shelf (has to be ordered with the printer)
- SD.0046.00 Suitable holder for all packages of stencils

Quick change system

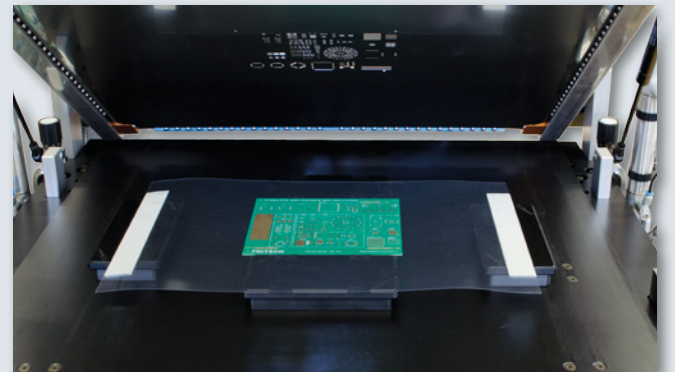
- 903.200.210 Four-sided quick change system for stencil size 555.5 x 555.5 mm
- 903.200.250 Four-sided quick change system for stencil size 709,5 x 555,5 mm

Further systems on request.



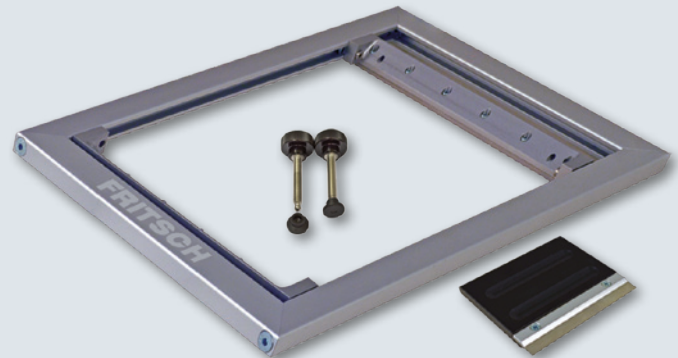
Test print frame

- 903.210.215 Test print frame for semi-automatiy stencil printer printALL210/L/XL. For checking the print layout and for easy alignment for the first print incl. a test print foil 240 x 400 mm
- 903.210.216 Test print foil 240 x 400 mm



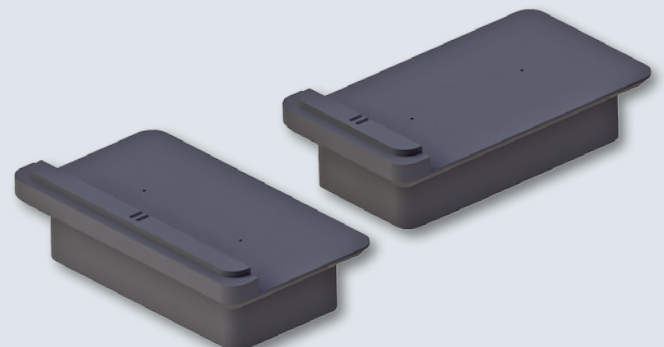
Prototype frame

- 903.210.205 Universal prototype tension frame for stencils, for printALL210/L, 2-sided-tension, fixture bores aren't necessary.
max. stencil size 420 x 320 mm
max. PCB usable area 330 x 280 mm
with hand squeegee 110 mm, metal and two knurled screws for fixture

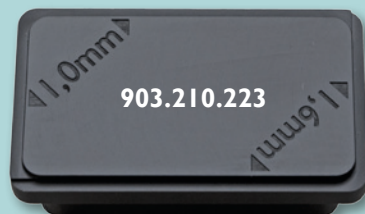


PCB fixture

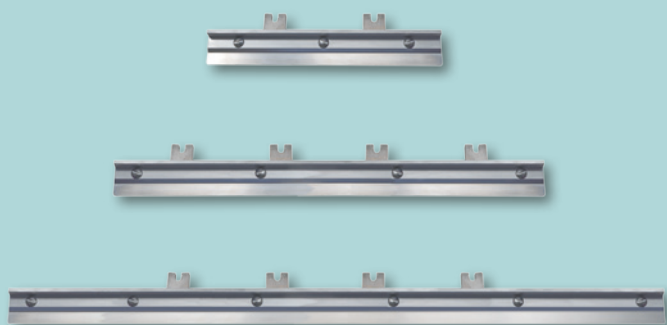
- 903.210.201 Magnetic PCB fixture slim 40 mm
Thickness of PCB of 1.6 mm
- 903.210.202 Magnetic PCB fixture wide 70 mm
Thickness of PCB of 1.6 mm
- 903.210.203 Magnetic PCB fixture slim 40 mm
Thickness of PCB of 1.0 mm
- 903.210.204 Magnetic PCB fixture wide 70 mm
Thickness of PCB of 1.0 mm



Accessories



PCB-support



- 903.210.220 Magnetic PCB support for thickness of PCB of 1.6 mm
- 903.210.221 Magnetic PCB support for thickness of PCB of 1,0 mm
- 903.210.228 Magnetic PCB support for thickness of PCB of 0,8 mm
- 903.210.229 Magnetic PCB support for thickness of PCB of 2,0 mm
- 903.210.223 Magnetic PCB fixture small 70 x 40 mm for thickness of PCB of 1.0 mm and 1.6 mm
- 903.210.224 Magnetic PCB fixture large 140 x 70 mm for thickness of PCB of 1.0 mm and 1.6 mm
- 903.210.225 Magnetic PCB fixture large with fixture for test print foil for thickness of PCB of 1.0 mm and 1.6 mm
- 903.210.226 Magnetic PCB fixture small 70 x 40 mm for thickness of PCB of 0,8 and 2,0 mm
- 903.210.227 Magnetic PCB fixture large 140 x 70 mm for thickness of PCB of 0,8 and 2,0 mm
- 903.210.238 Gripper for magnetic PCB fixture large

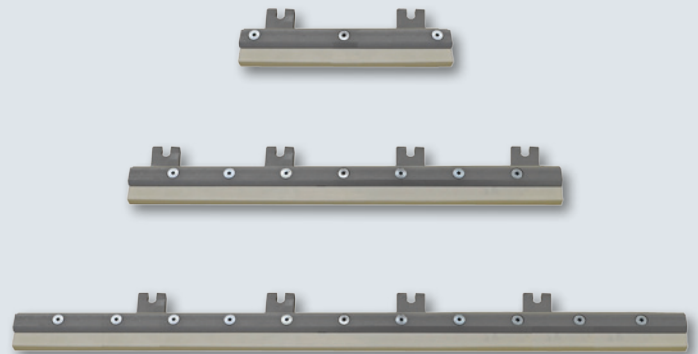
Metal squeegees

- 903.210.301 Holder with metal squeegee 205 mm
- 903.210.302 Holder with metal squeegee 290 mm
- 903.210.303 Holder with metal squeegee 375 mm
- 903.210.305 Holder with metal squeegee 420 mm
- 903.210.304 Holder with metal squeegee 460 mm
- 903.210.306 Holder with metal squeegee 545 mm
- 903.210.307 Holder with metal squeegee 630 mm
- 903.210.322 Surcharge for holder and metal squeegee 290 mm instead of standard 205 mm *
- 903.210.323 Surcharge for holder and metal squeegee 375 mm instead of standard 205 mm *
- 903.210.324 Surcharge for holder and metal squeegee 460 mm instead of standard 205 mm *
- 903.210.325 Surcharge for holder and metal squeegee 545 mm instead of standard 205 mm *
- 903.210.326 Surcharge for holder and metal squeegee 630 mm instead of standard 205 mm *
- 903.210.327 Surcharge for holder and metal squeegee 420 mm instead of standard 205 mm *

* For double squeegee (2 pieces)

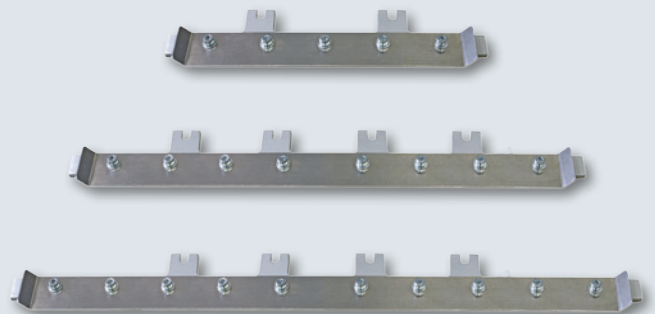
Rubber squeegee

- 903.210.329 Holder with rubber squeegee 110 mm for screenprinting
- 903.210.330 Holder with rubber squeegee 205 mm for screenprinting
- 903.210.311 Holder with rubber squeegee 290 mm for screenprinting
- 903.210.331 Holder with rubber squeegee 375 mm for screenprinting
- 903.210.332 Holder with rubber squeegee 420 mm for screenprinting
- 903.210.312 Holder with rubber squeegee 460 mm for screenprinting
- 903.210.333 Holder with rubber squeegee 545 mm for screenprinting
- 903.210.334 Holder with rubber squeegee 630 mm for screenprinting



Flood squeegee

- 903.210.315 Holder with flood squeegee 205 mm
- 903.210.310 Holder with flood squeegee 290 mm
- 903.210.316 Holder with flood squeegee 375 mm
- 903.210.318 Holder with flood squeegee 420 mm
- 903.210.317 Holder with flood squeegee 460 mm
- 903.210.319 Holder with flood squeegee 545 mm
- 903.210.320 Holder with flood squeegee 630 mm



Solder pastes

- 932.114 Solder paste for stencil printing, lead-free
S3X58-M406
SN96.5Ag3Cu, class 4 (grain size
20-38µm) 11,5 % flux, tub 500 g
- 50.0184.00 Solder paste for stencil printing, lead-free
SC BLF 04 96,5/T4
12 % flux, tub 500 g



Other machines



Automatic pick & place systems

The FRITSCH placeALL® is the standardized platform for flexible, high-precise and cost-effective Pick & Place of electronic components in prototyping and the production of small and medium series. All types of machines have the same software for setting, adjustment and production. The own high depth of production enables a fast customized implement.



Manual pick & place systems

For prototyping and for small series we have manual and semi-automatic manipulators in our product range. All steps in process like dispensing of welding pastes / glue up to the pick & place of components incl. Fine Pitch can be performed. Depending on application the machines may be equipped with feeders for tape rolls and sticks.



Reflow Oven

There are various stand-alone or inline reflow solder systems with the established heating system available for leaded or lead-free soldering and glue-hardening. Temperature sensors record profiles of components and analyse them. Several measuring instruments enlarge the offering.



Production line

To reach a higher pick & place performance and flexibility several machines can be linked. The positions are divided for the specific requirements.

Prototyping or a full-automatic productionline: depending on the customer request individual lines can be constructed.



SISTEMI www.pcbtech.it
STRUMENTI www.epcb.it

Viale Beniamino Gigli, 15
60044 Fabriano AN
info@pcbtech.it

Tel. +39 0732 250458
Fax +39 0732 249253
C.F. / P.I. 01474230420

FRITSCH

COMPLETE AND FLEXIBLE SMT SOLUTIONS

FRITSCH GmbH • Kastler Straße 11 • D-92280 Kastl-Utzenhofen
Tel: +49 (0) 96 25/9210-0 Fax: +49 (0) 9625/9210-49
www.fritsch-smt.com

© 2019 FRITSCH GmbH - Subject to change - 10/2019 EN