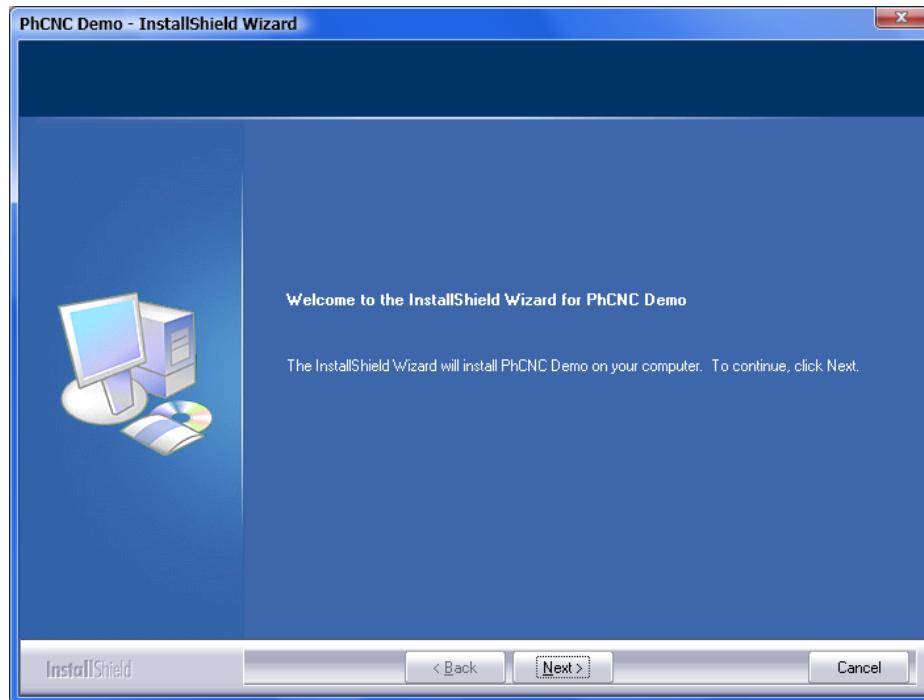


Short PhCNC Demo Manual

v5.3.5


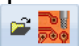
1. Installation

Start PhCNC_Demo_Setup.exe (32bit) or PhCNC64_Demo_Setup.exe (64bit)




After the installation, start PhCNC Demo using the short cut  PhCNC Demo

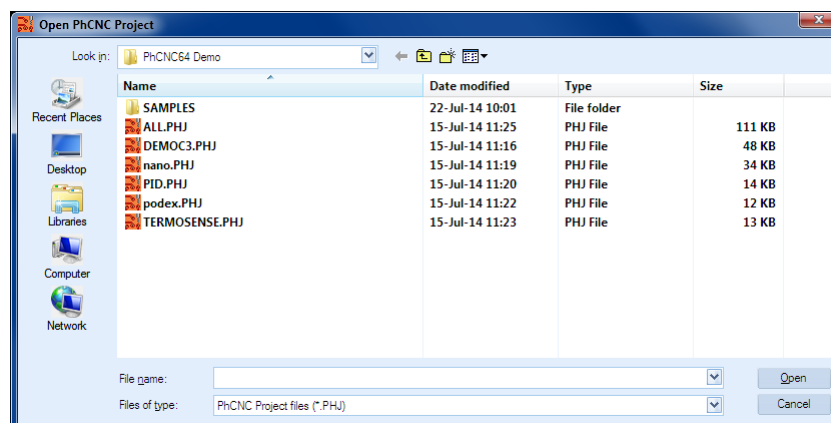
2. Using PhCNC Demo

To start, you must first load gerber & drill files or PhCNC project file. We recommend you to start with the example files provided with this demo. You can import them with  or load PhCNC project file (.PHJ) with  (easier way).

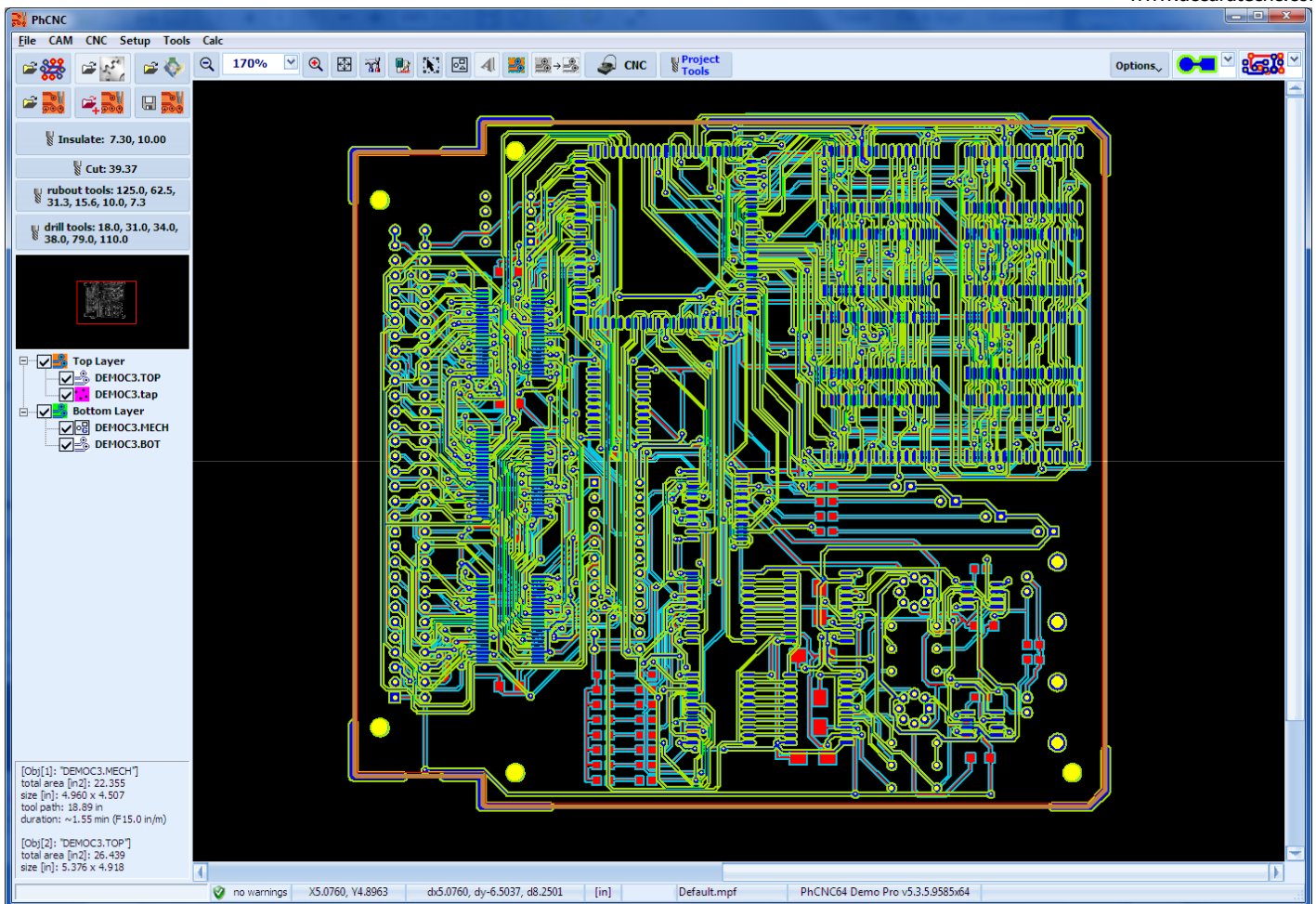
2.1 Load PhCNC project file or import gerber & drill data

2.1.1 Load PhCNC project file

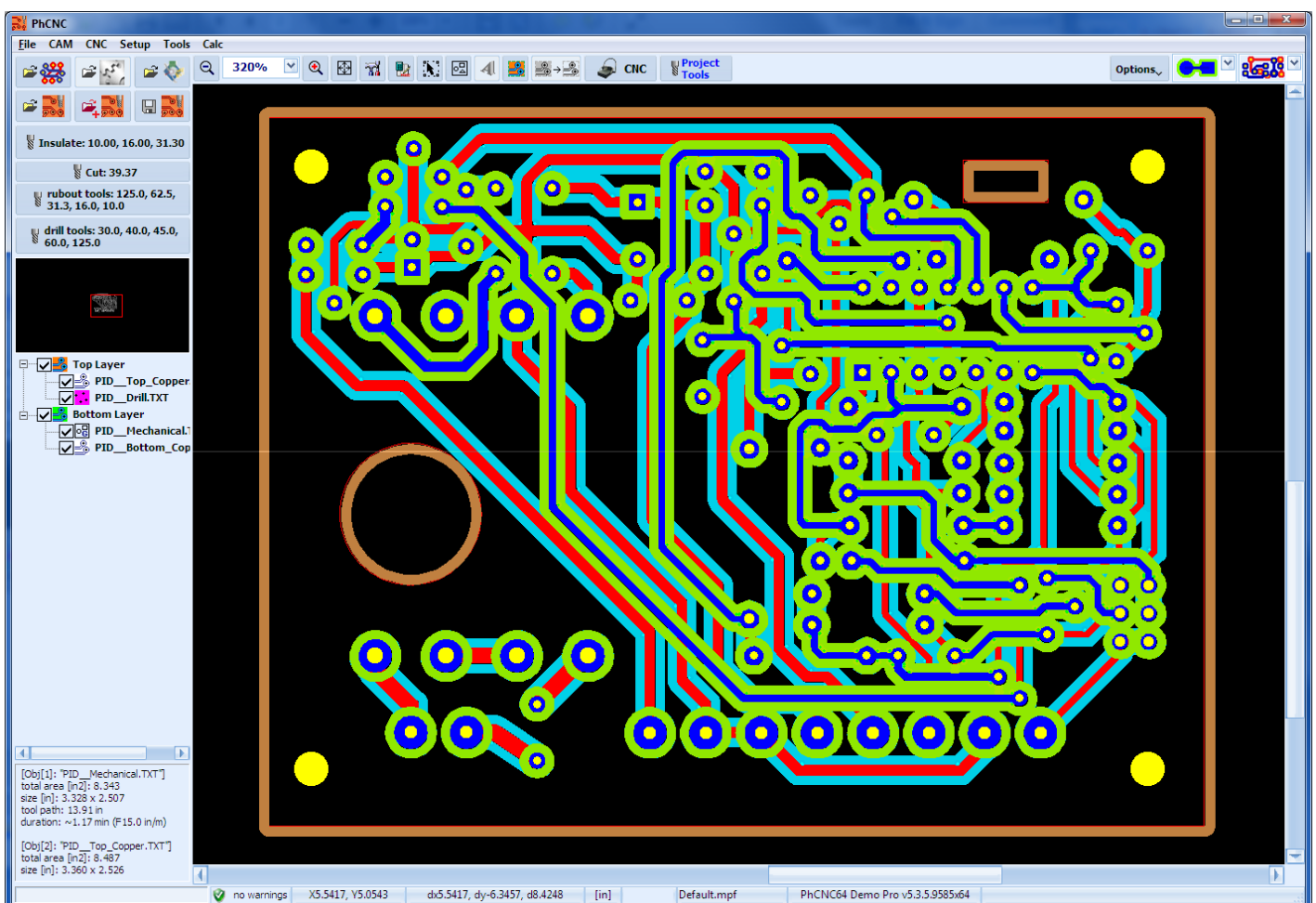
It is more convenient to load with  some project file (from C:\Program Files\PhCNC Demo):



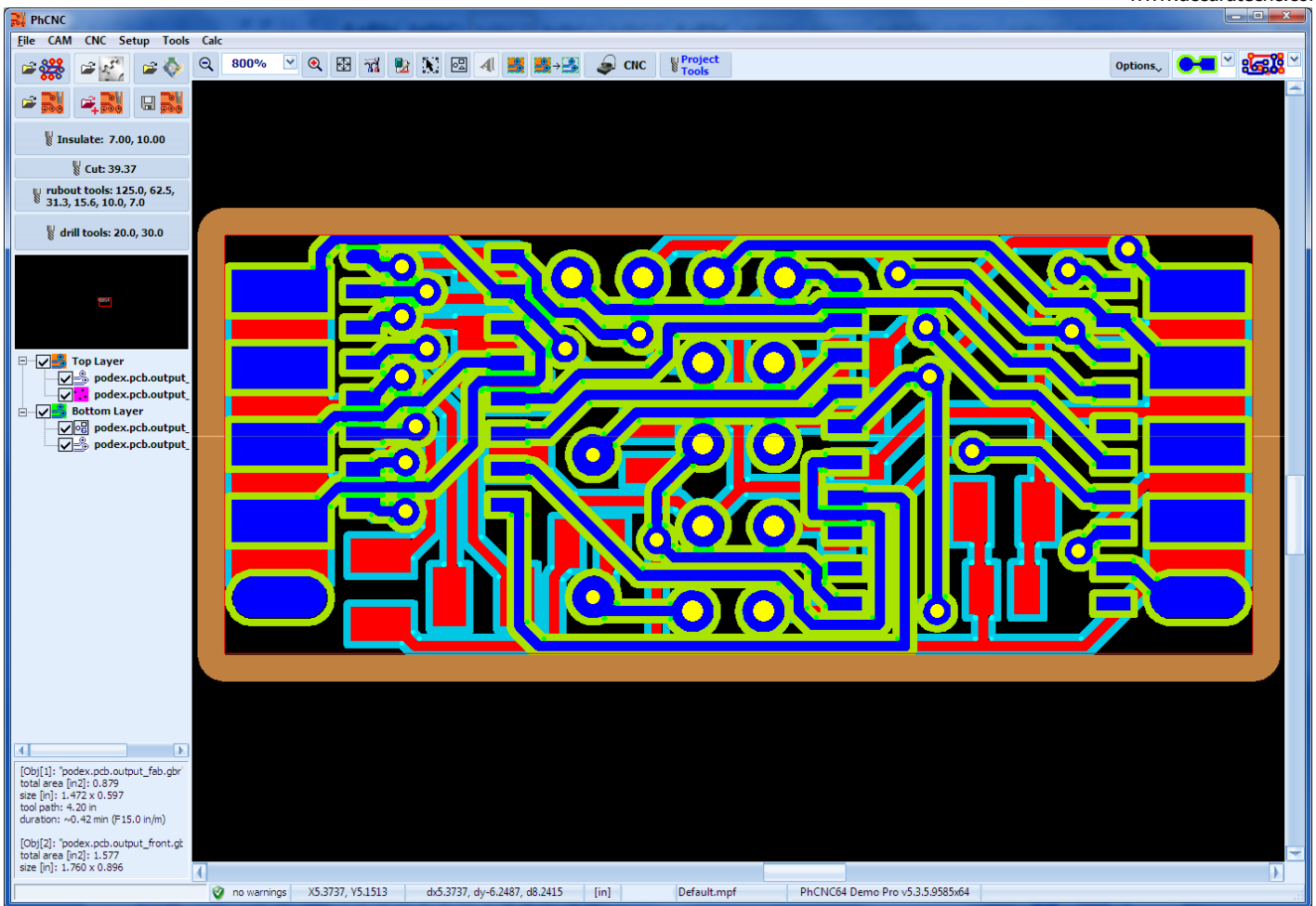
Shown below are sample projects provided with this demo version of PhCNC.



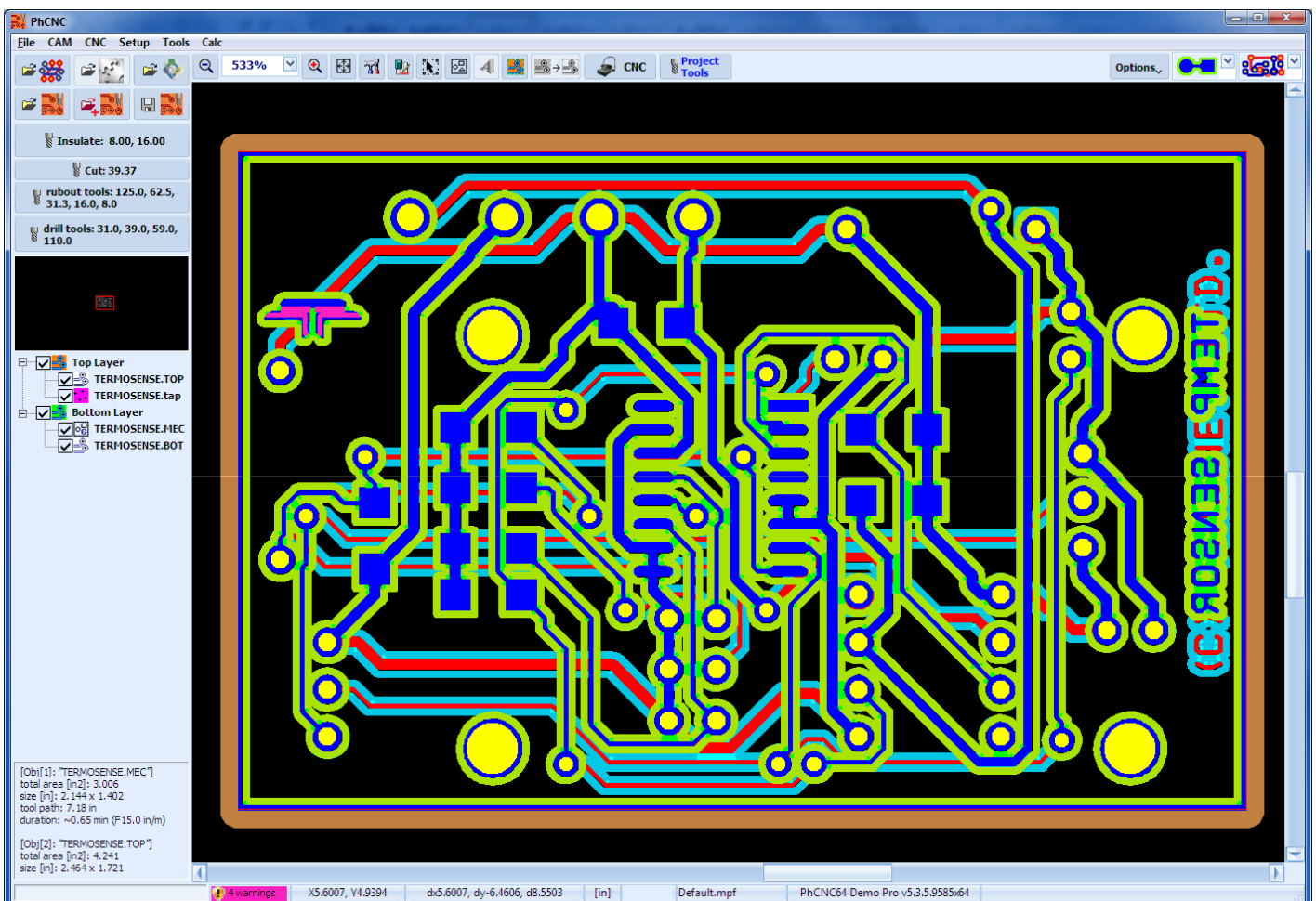
DEMOC3.PHJ



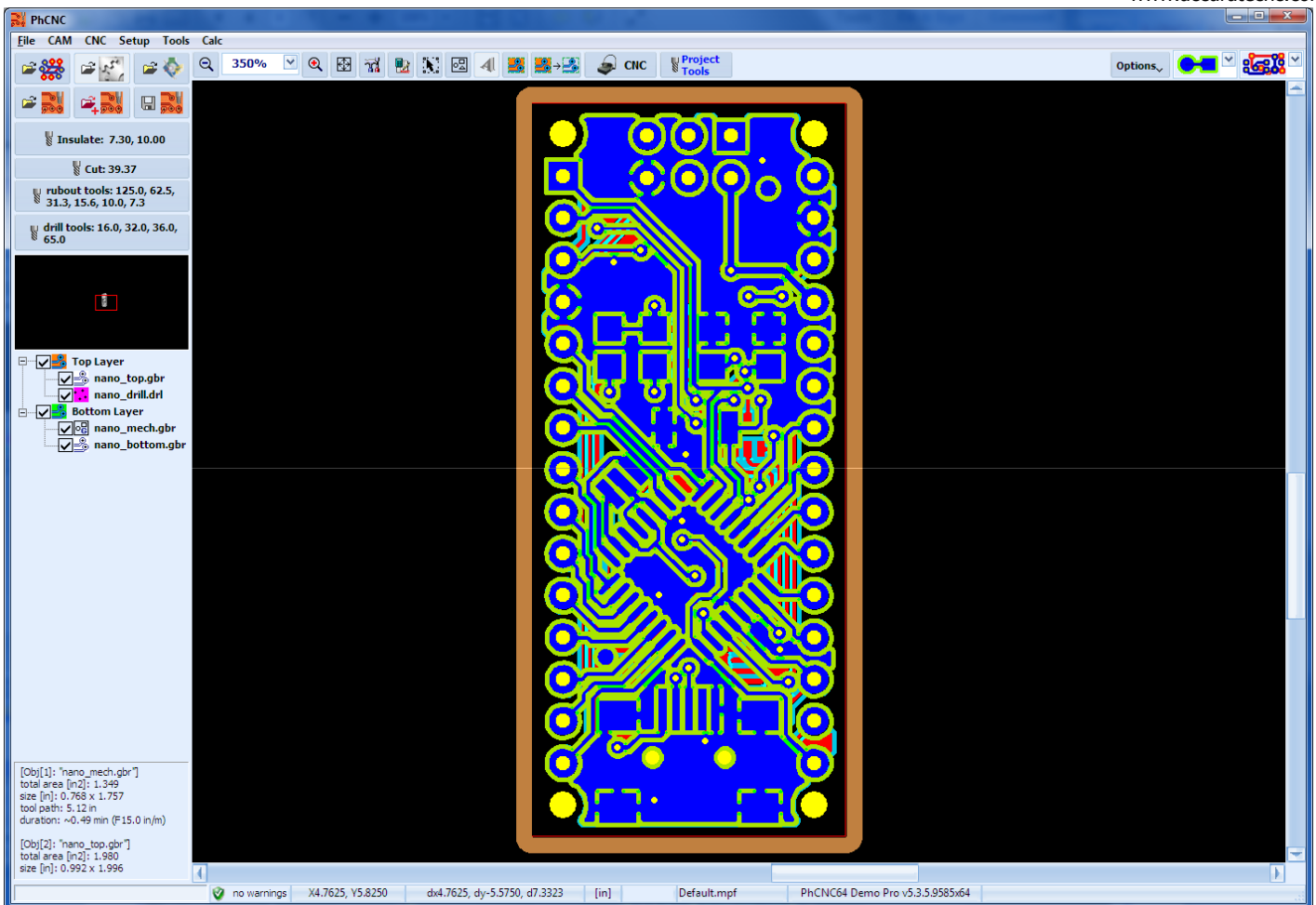
PID.PHJ



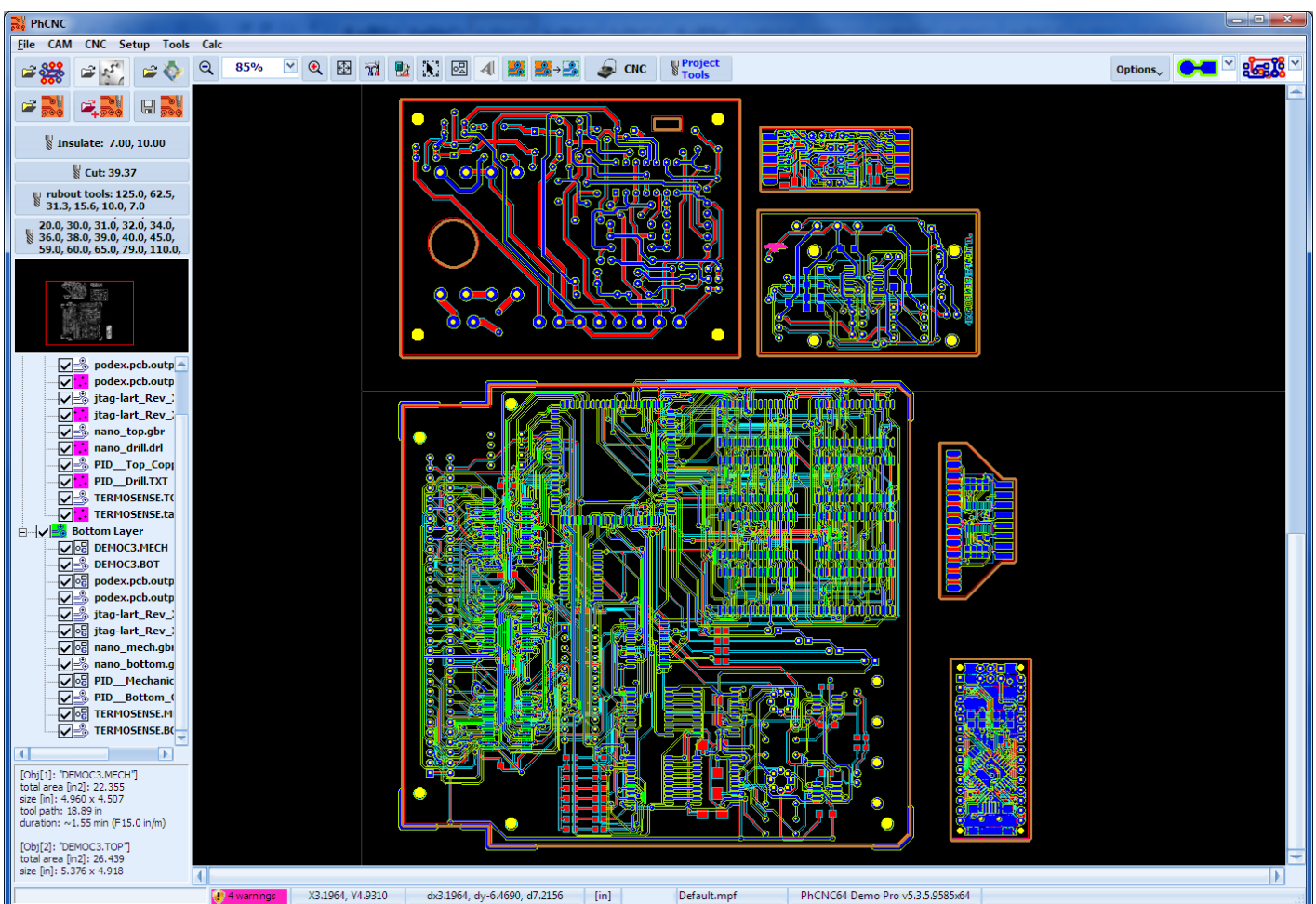
podex.PHJ



TERMOSENSE.PHJ



nano.PHJ



ALL.PHJ

Gerber and drill files used to generate each of the project files (.PHJ) are located in SAMPLES folder. Each project has its own sub-folder. Typically you will have an output from a CAD system that include gerber and

drill files. After you import them in PhCNC and complete all CAM manipulations and all CNC settings you may save them as a project file (.PHJ). Usually you will do this after a successful run. The advantages – first, project files contain all information including all your settings, second they are more compact and save disk space.


Now let start with, what you will usually do with each new project.

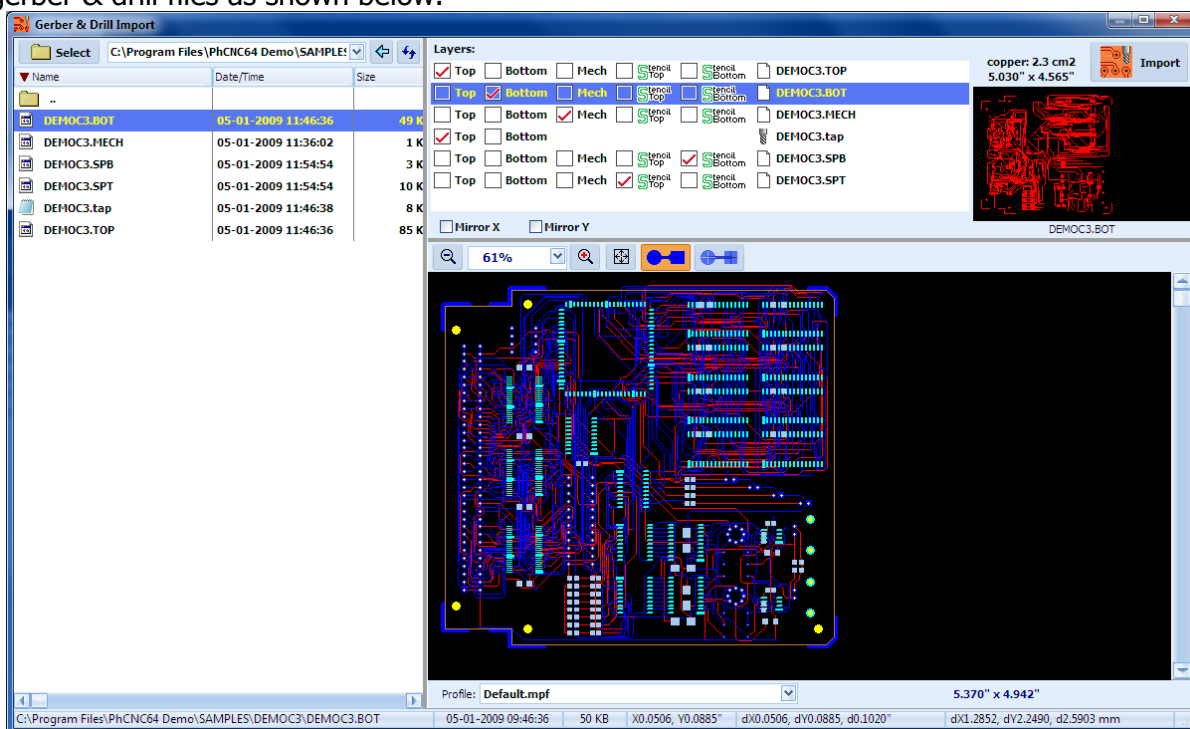
2.1.2 Loading Gerber & drill files (provided with this demo)

Sample gerber & drill files are located in this folder:

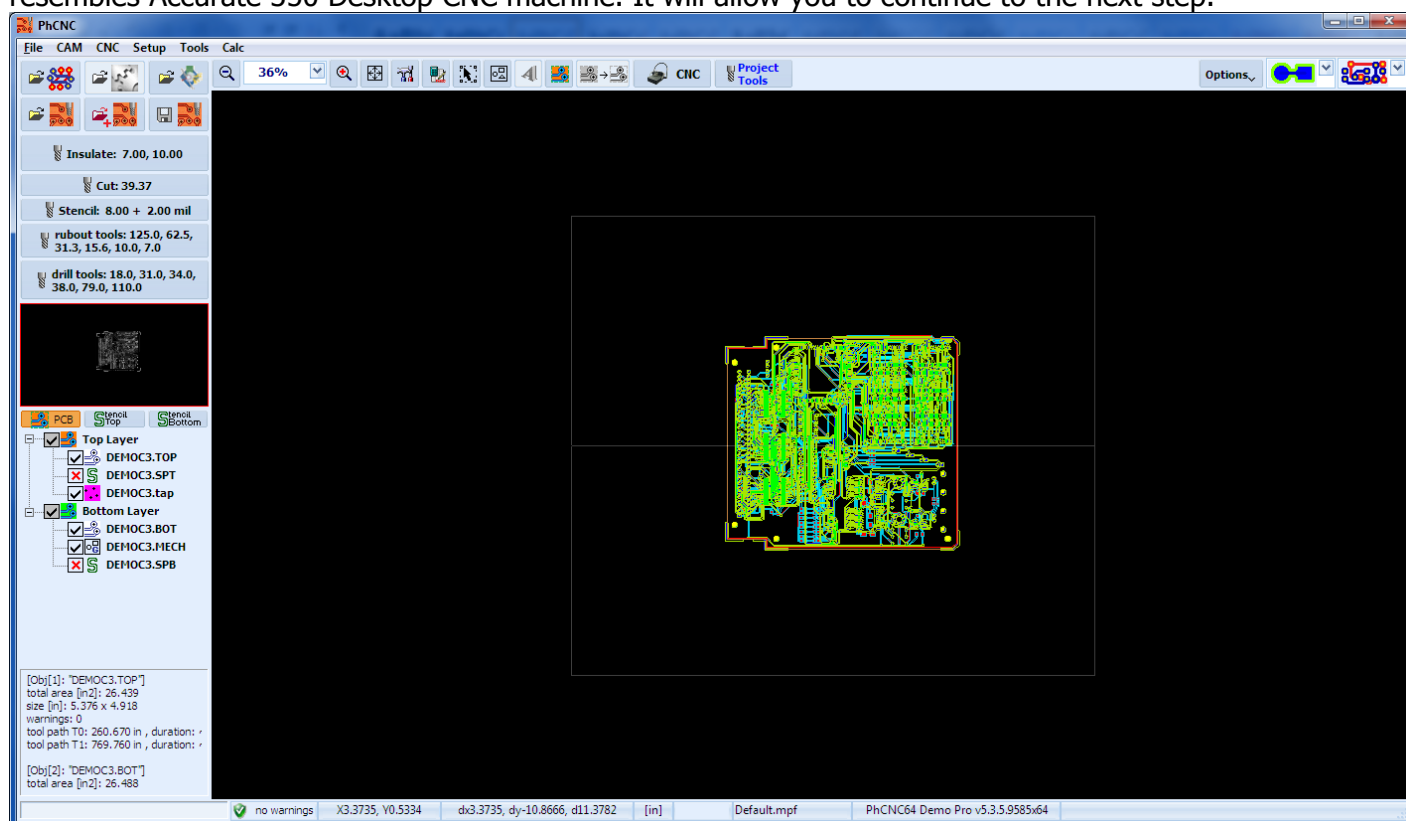
"C:\Program Files\PhCNC64 Demo\Samples".

To import them:

- Click on .
- select one of the samples folder (like "SAMPLES\DEMOC3")
- select gerber & drill files as shown below:

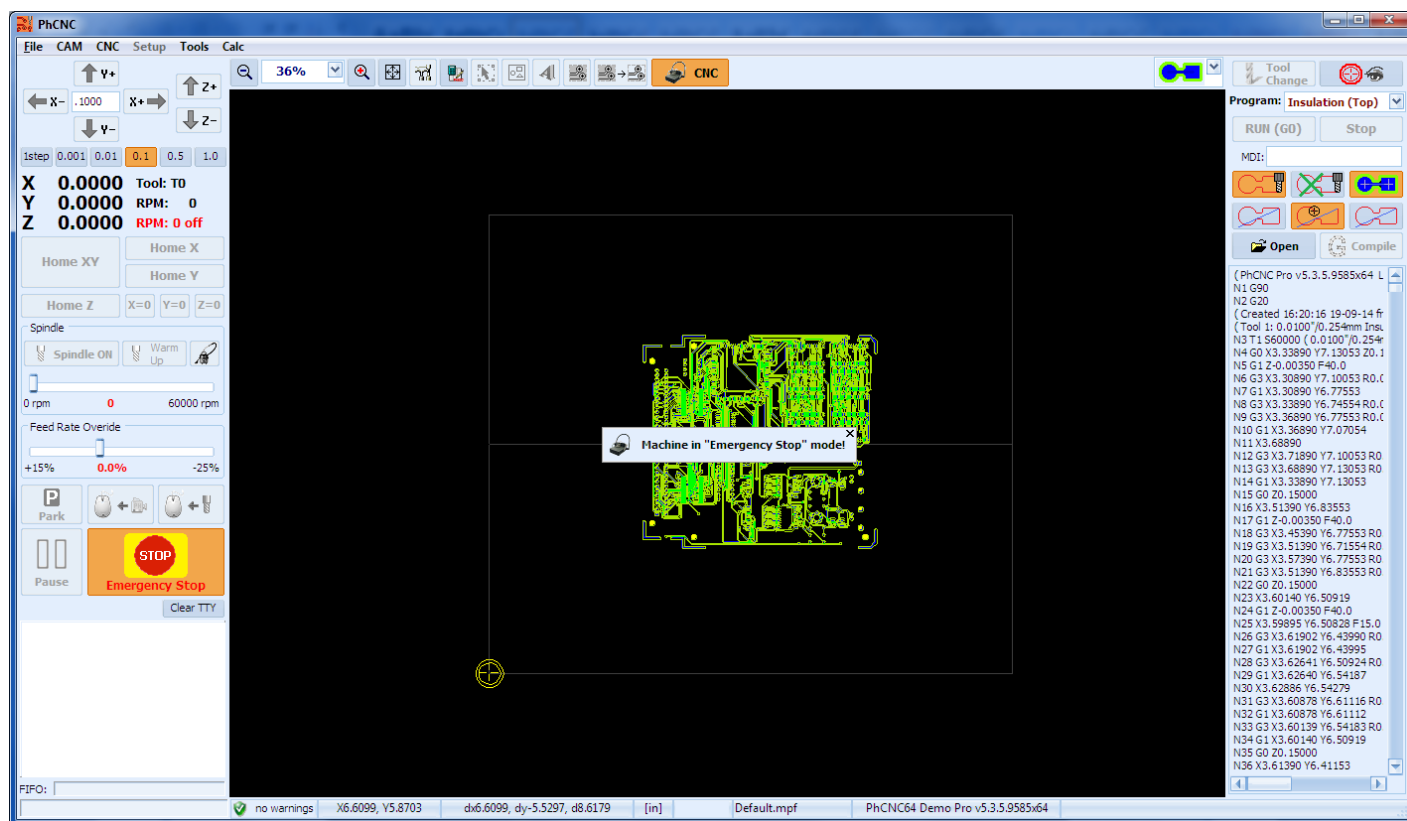


Next, you will need a machine to run your board. PhCNC Demo has an embedded software simulator that resembles Accurate 350 Desktop CNC machine. It will allow you to continue to the next step.



2.2 To start machining your board clicks on icon.

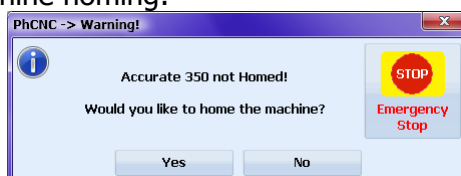
You are in CNC mode. PhCNC Demo simulates Accurate 350 machine (with manual tool change!):



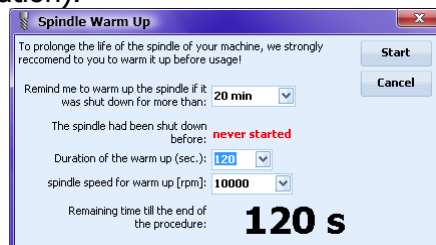
To start, press **Emergency Stop Button**. This action will release the Emergency Stop Status.



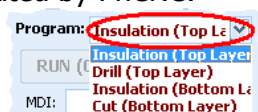
Click **Yes** to start the process of machine homing:




Click on **Start Button** in the Spindle Warm Up window where you may **Cancel** the process. Actually there is no spindle to warm up (this is a simulation).



Select any of the machining programs generated by PhCNC:



Click on **RUN (GO)**

During the execution you may change Zoom (In/Out) and watch the process using active  **Scroll In View**

If you would like to know more about PhCNC:

Please, read the full PhCNC manual then load your own CAM files into the PhCNC Demo and try any function described in the manual.

If you need to uninstall PhCNC Demo:

Select PhCNC Demo from Control Panel-> "Add/Remove Programs" (2000/XP/2003) or Control Panel-> "Programs and Features" (Vista/Win7/8/8.1).

You may also start PhCNC Demo installation program (PhCNC_Demo_Setup.exe or PhCNC64_Demo_Setup.exe) and select "Remove"!

Your PC must cover the minimum system requirements (listed below) to run this program successfully.

Minimum (recommended) system requirements:

OS: 32-bit(x86): Win2000/XP/2003/Vista/Win7/8/8.1 or 64-bit(x64): XP/Vista/Win7/8/8.1
 RAM: 512 MB (1GB+)
 CPU: 600 MHz (2GHz+)
 Display: 1024x768



PHCNC

Accurate CNC, Inc.

6016 A. High View Dr,
 Fort Wayne, IN 46818
 USA

Phone: (260) 489-7600
Fax: (260) 489-7610
Email to: support@accuratecnc.com
phcnc@accuratecnc.com
URL: www.accuratecnc.com

For Orders and Customer Support
 (800) 970-8066

Monday- Friday: 8AM-5PM EST
 Saturday: 9AM-2PM EST



Viale Beniamino Gigli, 15
 60044 Fabriano AN
info@pcbtech.it

SISTEMI www.pcbtech.it
STRUMENTI www.epcb.it

Tel. +39 0732 250458
 Fax +39 0732 249253
 C.F. / P.I. 01474230420